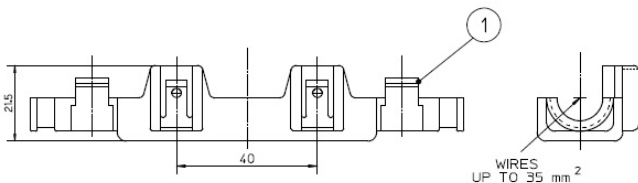
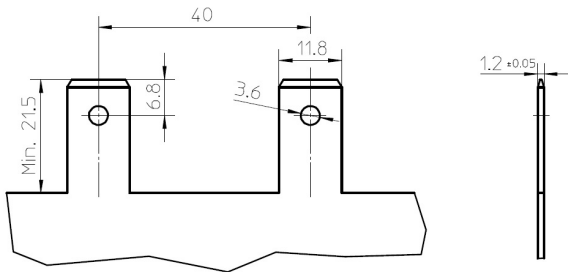
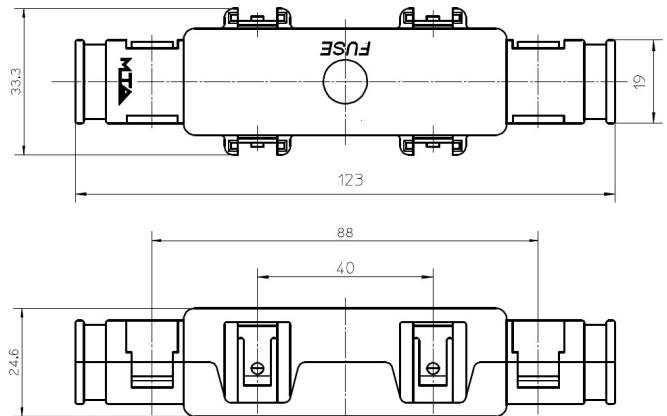
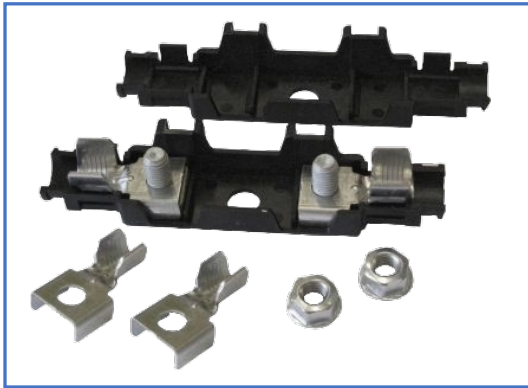


Mega Fuse Holder

FU28

- Material:** All metal self-locking flanged nut M8x6.9: Steel
Screw M8x14: Steel
Hal-shell (Black): PA 66-G30 HB
- Features:**
 - Suits FUMEG fuses
 - Includes:
 - 2 x Terminals to suit cable 10 - 20mm²
 - 2 x Terminals to suit cable 25 - 35mm²
- Temperature range:** -40°C to +130°C
- V max:** 32V
- IP:** IEC529 - 20 (for terminals protected with heat shrink tubing)



CRIMP STATEMENTS								
MTA P/N	RATED CURRENT (A)	Wire sec. (mm ²)	CONDUCTOR				TEAR OUT FORCE (N)	
			H1	W1	A1 ±0.05	L1		B1
17.08110	90	10	11	11	4.70	9.6	10.4	600
		20			5.50	9.68	10.4	850
17.08120	100	25	13.5	14	6.10	11.25	10.4	900
		35			6.80	11.22	10.4	1100